



Rete Rurale  
Nazionale  
2007.2013



Unione Europea



INEA

Regione Emilia-Romagna



# National Network of Rural Areas

## The Emilia Romagna Region experience

Roberto Gigante, NNR - Emilia Romagna

Wroclaw,  
23-24th October 2009





Rete Rurale  
Nazionale  
2007.2013



Unione Europea



INEA

Regione Emilia-Romagna



# Why the Rural Network was made?

- Necessity to support the information process in order to fill up the dispersion of rural operators in the country
- Presence of several subject very different from them (directly or indirectly) connected to the rural development.
- Encourage the support of employments offer in order to reduce the abandoning process in the rural areas, in particularly of young people
- Demand to satisfy specific necessity of different Italian regions
- Increase the value of bests Italian rural areas, but at the same time come out possible critical situation of governance system



Rete Rurale  
Nazionale  
2007.2013



Unione Europea



INEA

Regione Emilia-Romagna



## The National Rural Network

- All the states of European Community have to supply with a National Rural Network connected to the European one
- The network have to perform different duties:
  - Detect and transfer best practice (in the region, in the Country, and in Europe)
  - Organize and exchange experiences
  - Set formation programs
  - In the large, the network have to know and spread the result of the new policy of Rural Development



# Which is the strategy?

- The analysis of critical situation and the require of intervention pull out three global objective that the Rural Network Program intend to follow:

1

- Improvement of governance

2

- Reinforcement of planning and management activity

3

- Diffusion of best practice and knowledge



Rete Rurale  
Nazionale  
2007.2013



Unione Europea



INEA

Regione Emilia-Romagna



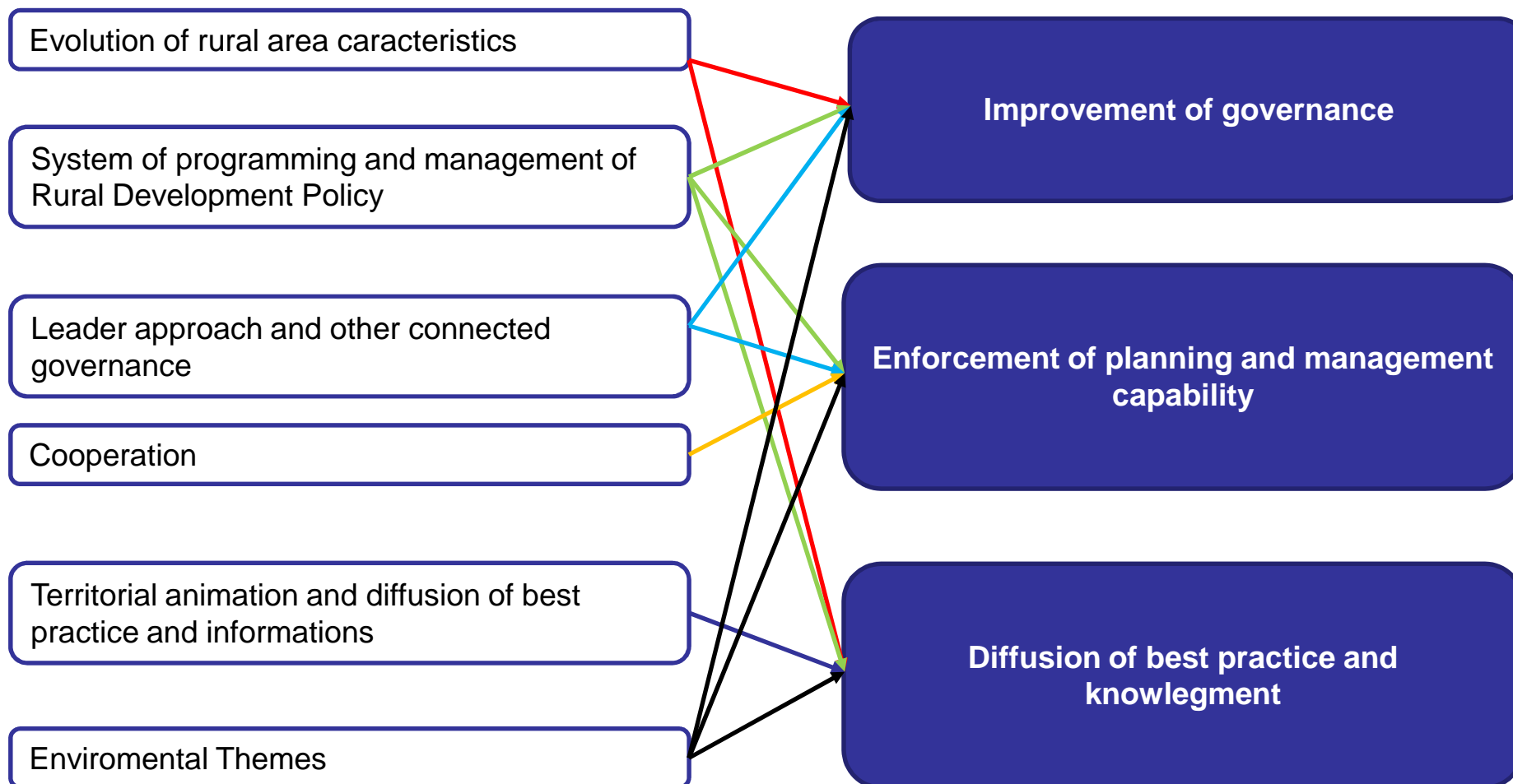
# The program of National Rural Network

For a country like Italy, characterized by a strong administrative decentralization system, but with a growing request of a bottom-up participation to the rural development, the decision to use the National Rural Network is based on:

- Action system and support to the regional administrative services in order to help management of Rural Development Program and improve performance, efficiency, and integration with other policy
- Specific actions to enforce planning and management ability of different subjects involved in the RDP accomplishment (for examples: LAG, other middle subject occupied in the Leader approach, ex....)
- Activity of location, analyzing, portability and transfer of best practice and innovations.
- Support to the promotional services for local rural operator.



## Objective connected to the Priority of intervention





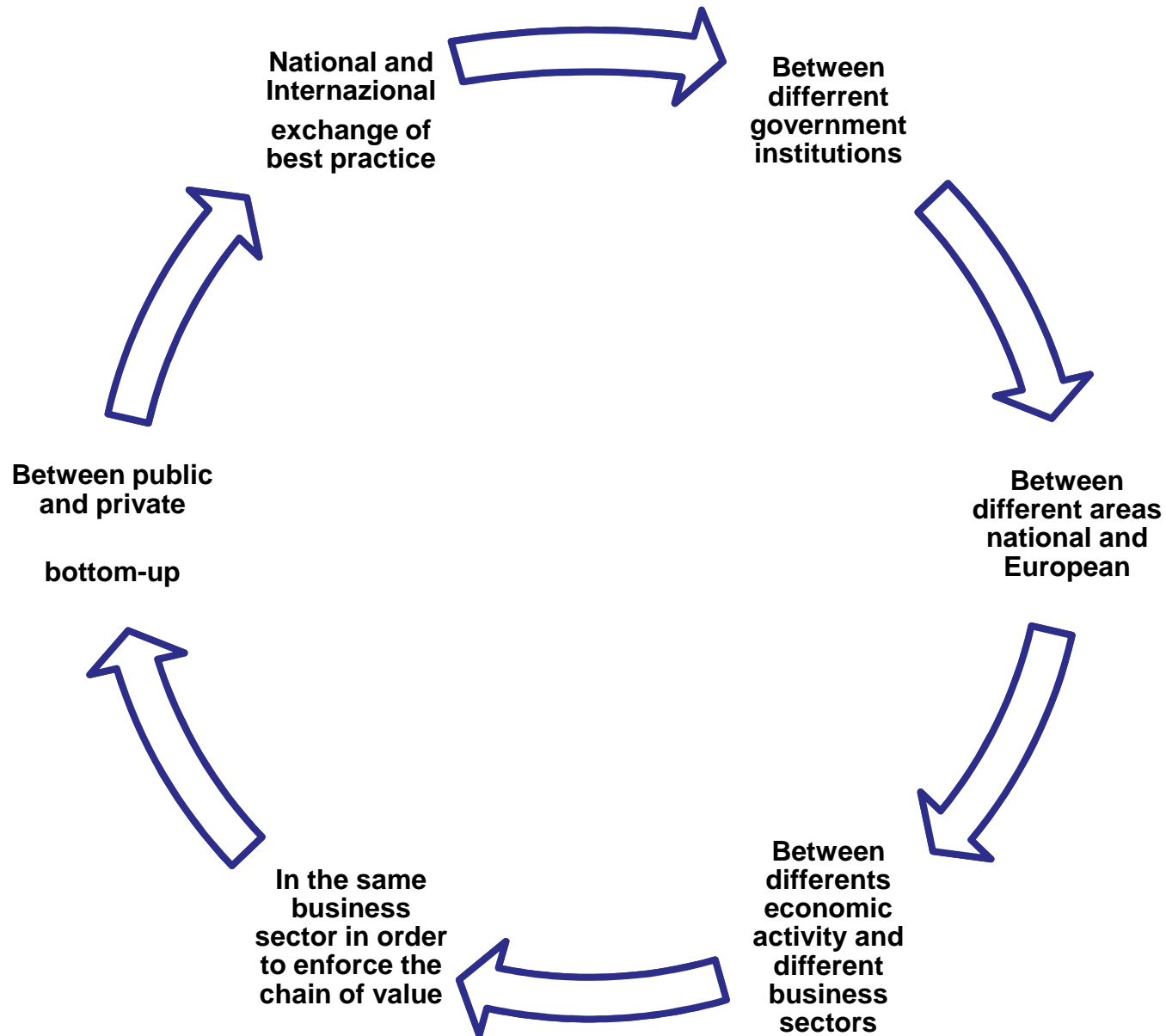
## The program of italian national rural network

Type of investment	Public quote	FEASR	% of total
Management of National Rural Network	12.437.964	6.218.982	15%
Implementation of NRN program	70.481.801	35.240.900	85%
TOTAL	82.919.766	41.459.883	100%

- The Network cover all the country with Regional Position of National Rural Network



Though a full and wide democratic participation of all institutional partners, involved in social-economics and environmental themes, included the NGO, the Rural Network have to establish a relationship with all the subject, and consolidate reports:







Rete Rurale  
Nazionale  
2007.2013



Unione Europea



INEA

Regione Emilia-Romagna



# The action plan of NRR

- The action plan, through a setting up of different thematic networks, will focus on obligatory measures but also on specific requirements of the regions:
  1. Monitoring and evaluation of RDP
  2. Leader approach
  3. Cooperation
  4. Agro environmental
  5. Quality and diffusion of innovation
  6. Other strategic theme identify by the Network



Rete Rurale  
Nazionale  
2007.2013



Unione Europea



INEA

Regione Emilia-Romagna



# Regional positions of NRN

- The program of NRN foresees that the activity will be realized:
- At the central level by the different thematic Task Force organized by the National Unity of Animation and coordination (“UNAC”)
- At regional level through different regional positions (“regional antennas”) constituted in every single region in the Authority of management of regional-RDP



## “Direction cabin”

Function of coordination of all activity done by Network

### UNAC

Unità Nazionale di  
Animazione e  
coordinamento

Programming  
functional

### INEA

Istituto Nazionale di  
Economia Agraria

Operating

### REGION

Authority of  
management  
of regional RDP

Direct contact,  
coordination

## Regional Position (regional antennas)

More regional antennas of Rural Network constitute an interface regional and local (to intercept different requests of local level)



Rete Rurale  
Nazionale  
2007.2013



Unione Europea



**INEA**

**Regione Emilia-Romagna**



# Emilia Romagna Regional Rural network



National Rural  
Network

**INEA**



Regional  
antennas

**Regione Emilia-Romagna**

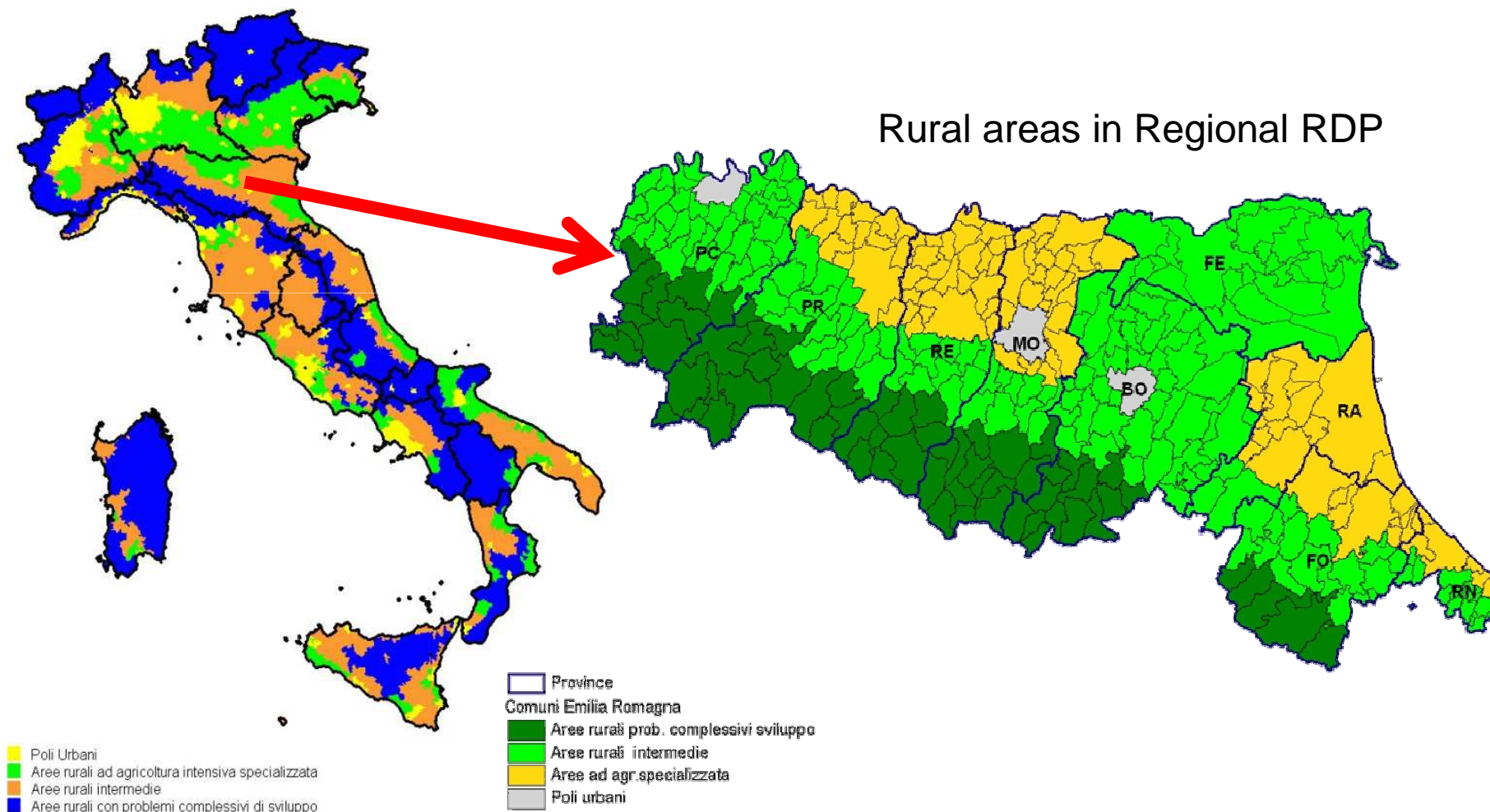


Authority management  
of regional-RDP and  
monitoring and  
evaluation

**INFORMATIONS, BEST PRACTICE EXCHANGE**



# General overview of Emilia Romagna Region





## Division of economic resources in Italy - EAFRD

1	V a l l e d ' A o s t a	5 2 , 2 2 1 , 0 0 0	0 . 6 %
2	M o l i s e	8 5 , 7 9 0 , 0 0 0	1 . 0 %
3	T r e n t o	1 0 0 , 6 5 2 , 0 0 0	1 . 2 %
4	L i g u r i a	1 0 6 , 0 4 7 , 0 0 0	1 . 3 %
5	F r i u l i - V e n e z i a G i u l i a	1 0 8 , 7 7 3 , 0 0 0	1 . 3 %
6	B o l z a n o	1 3 7 , 5 7 5 , 0 0 0	1 . 7 %
7	A b r u z z o	1 6 8 , 9 1 1 , 0 0 0	2 . 0 %
8	M a r c h e	2 0 2 , 3 2 0 , 0 0 0	2 . 4 %
9	L a z i o	2 8 8 , 3 8 4 , 0 0 0	3 . 5 %
1 0	U m b r i a	3 3 4 , 4 3 0 , 0 0 0	4 . 0 %
1 1	T o s c a n a	3 6 9 , 2 1 0 , 0 0 0	4 . 5 %
1 2	B a s i l i c a t a	3 7 2 , 6 5 0 , 0 0 0	4 . 5 %
1 3	P i e m o n t e	3 9 4 , 5 0 0 , 0 0 0	4 . 8 %
1 4	L o m b a r d i a	3 9 5 , 9 4 9 , 0 0 0	4 . 8 %
1 5	V e n e t o	4 0 2 , 4 5 7 , 0 0 0	4 . 9 %
1 6	E m i l i a - R o m a g n a	4 1 1 , 2 5 1 , 0 0 0	5 . 0 %
1 7	S a r d e g n a	5 5 1 , 2 5 0 , 0 0 0	6 . 6 %
1 8	C a l a b r i a	6 2 3 , 3 4 1 , 0 0 0	7 . 5 %
1 9	P u g l i a	8 5 1 , 3 2 7 , 0 0 0	1 0 . 3 %
2 0	C a m p a n i a	1 , 0 8 2 , 3 4 9 , 0 0 0	1 3 . 1 %
2 1	S i c i l i a	1 , 2 1 1 , 1 6 3 , 0 0 0	1 4 . 6 %
	n e t w o r k	4 1 , 4 5 9 , 8 8 3	0 . 5 %
	t o t a l I t a l y	8 , 2 9 2 , 0 0 9 , 8 8 3	1 0 0 . 0 %



Rete Rurale  
Nazionale  
2007.2013



Unione Europea



INEA

Regione Emilia-Romagna



## Characteristics of our Region

### Socio-economic context:

- Total population = 4.1 million inhabitants.
- Population density = 187.6 in hab./km<sup>2</sup>.
- Per capita GDP (pps) = 139% of EU-25 average.

### Rural areas:

- The 3 typologies of rural area defined by the NSP are present.
- 84% of the population and 98% of the territory.
- Population density = 161.3 inhab./km<sup>2</sup>.



## Importance of the agricultural, forestry and food sector:

### Land utilisation

- The utilised agricultural area covers 60% of the territory and forests 28%.
- UAA - utilised agricultural area -1,074,552 ha arable land (77.6%) , permanent crops (13.6%) permanent pastures (8.7%)

### Holding dimens

- The average surface of the agricultural holdings is 12.3 ha (IT: 6.7 ha; EU: 16 ha).

### Value added

- The primary sector represents 3.2% of the regional value added and food industry 3.9%. In the 2008 the V.A of 1° primary sector (about 2.115 million ) represented 9,7% of the national

### Employment

Employment in the primary sector respects 5.5% of the regional total.





Rete Rurale  
Nazionale  
2007.2013



Unione Europea



**INEA**

**Regione Emilia-Romagna**



## Strategy

- Favor organization and aggregations of chain
- Favor the environmental rule of agriculture, sustainability of productions model and protect the biodiversity
- Favor food safety, food quality and protect the distinction of products origin (13 DOP and 11 Gi)
- Favor the production of renewable energy
- Favor the multifunctionality of rural farms
- Promote development of rural areas, and protection of environment

The needed to focus the interventions to the specific targets detected before and to definite areas requires a selectivity choice in order to have a better allocation of public resources.



Rete Rurale  
Nazionale  
2007.2013



Unione Europea



INEA

Regione Emilia-Romagna



## Objective for Axes

### Three macro objective:

- 1) Improving the competitiveness of agriculture and forestry through support to restructuring of the sector
- 2) Improvement of the environment and rural development through support to the management of the territory
- 3) Improvement of the quality of life in rural areas and promoting the diversification of economic activities.

### Four priority axes :

Axes 1 improvement of competitiveness of the agricultural and forestry sectors

Axes 2 territory management

Axes 3 diversification of the rural economy and quality of life

Axes 4 leader approach



Rete Rurale  
Nazionale  
2007.2013



Unione Europea



INEA

Regione Emilia-Romagna



## Summary of different measures activated

- Axes 1 – 9 measures on 14 scheduled
- Axes 2 – 8 measures on 13 scheduled
- Axes 3 – 7 measures on 8 scheduled
- Axes 4 – LEADER : 5 measures on 5 scheduled
- Technical assistance

29 measures proposed on 41 scheduled against of 14 activated in the last RDP program of 2000-2006.

+ 1 with Health Check reform = TOTAL OF 30



Rete Rurale  
Nazionale  
2007.2013



Unione Europea



INEA

Regione Emilia-Romagna



## Cross thematic priority

The Regional Rural Development Program will assume some thematic priority cross the axes and also cross the areas defined before:

- **Aids and favor to young entrepreneur**
- **Improve the value of agricultural products made by biological process;**
- **Promotion of quality products - OGM free ;**
- **Improve and support and the development of chain for the production of renewable energy**



Rete Rurale  
Nazionale  
2007.2013



Unione Europea



INEA

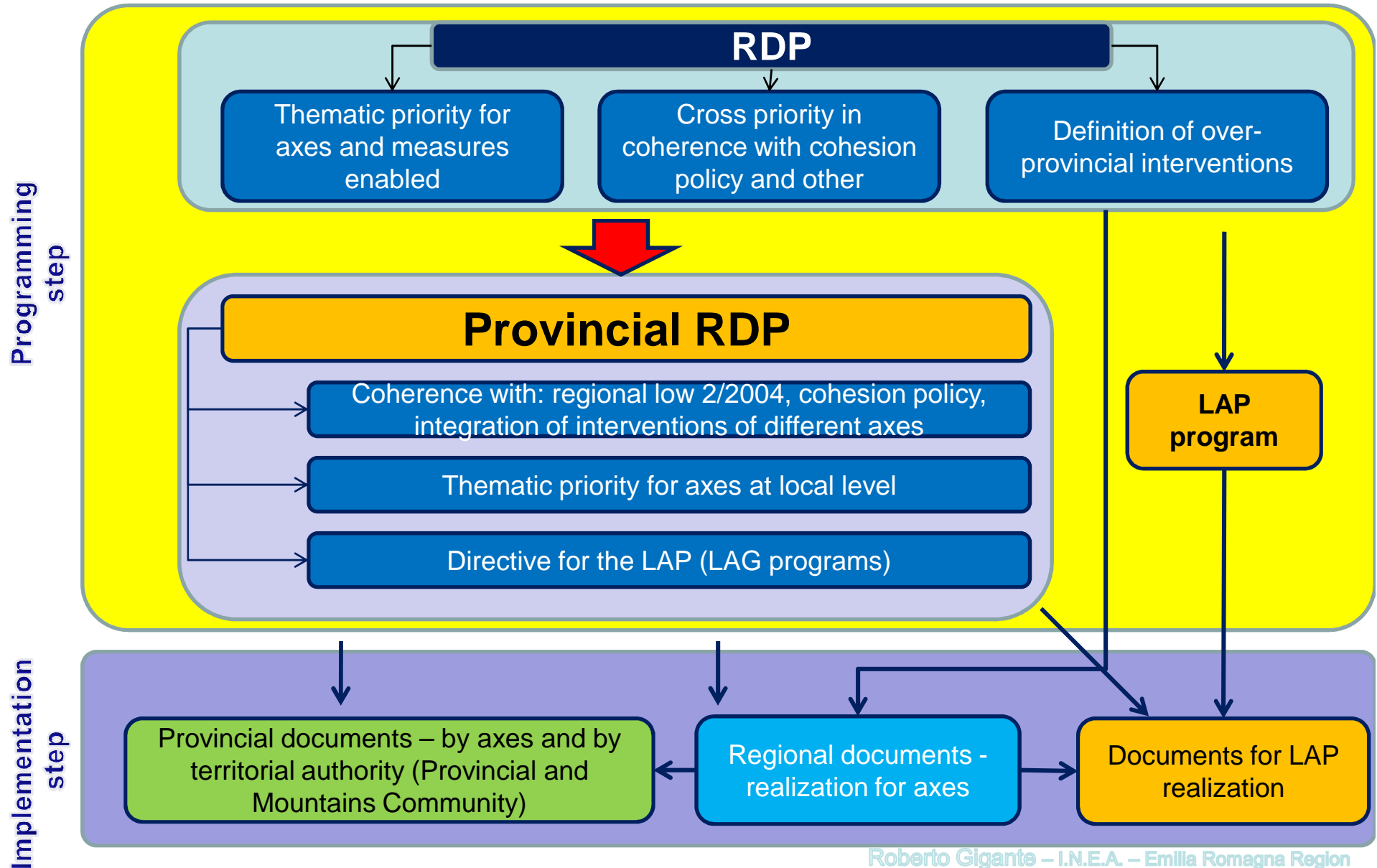
Regione Emilia-Romagna



## Territorial priority

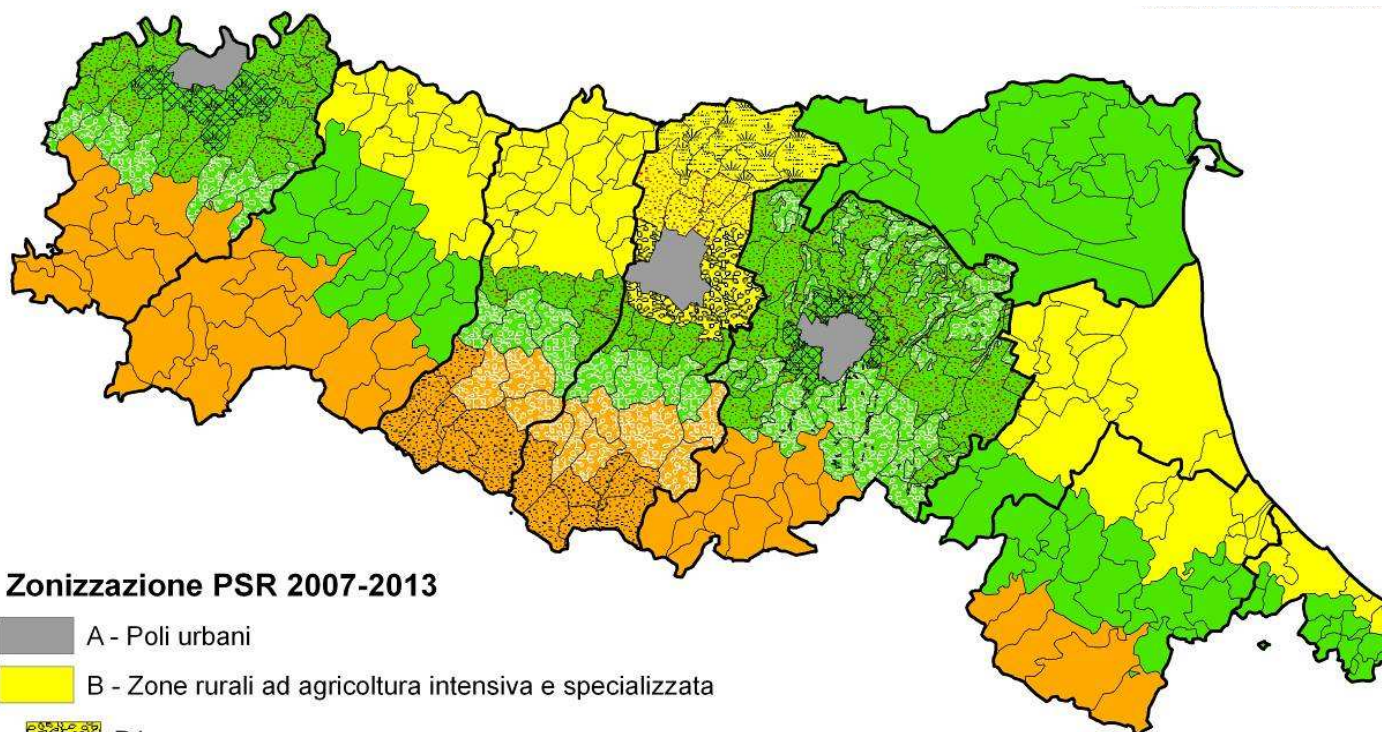
- Axes 1:** differentiate the percentage of appropriation for holdings in less-favoured areas ( areas with overall issues of development and part of intermediate rural areas);
- Axes 2:** the application of special allowances for the less-favoured areas (all areas with overall issues of development and part of intermediate rural areas)
- Axes 3:** focus the interventions in intermediate areas with a greater degree of rurality (areas with overall development issues and intermediate rural areas)
- Axes 4:** territories selected for the Leader initiatives: areas with overall development issues and intermediate rural areas

# Governance scheme


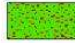





## Rural areas: as detailed in the Province RDP



### Zonizzazione PSR 2007-2013

-  A - Poli urbani
-  B - Zone rurali ad agricoltura intensiva e specializzata
  -  B1
  -  B2
  -  B3
-  C - Zone rurali intermedie
  -  C1
  -  C2
  -  C3
-  D - Zone rurali con problemi complessivi di sviluppo
  -  D1
  -  D2



Rete Rurale  
Nazionale  
2007.2013



Unione Europea



INEA

Regione Emilia-Romagna



## Governance

Introduction of management conjoint responsibility, through: the allocation of the large part of resources at the provincial level:

definition of mechanism of “premium” compensation in the allocation of resources between territorial bodies in order to achieve the full use of financial resources allocated to rural development.

In overall terms, the allotment of resources provides:

the 71 % of the total resources of the RDP will be allocated (assigned) to the provinces for the financing of the PRIP;

the 24 % reserved to the region for interventions of over-provincial nature;

the 5 % allocated to the LAG.





Rete Rurale  
Nazionale  
2007.2013



Unione Europea



## Financial table

Assi	Risorse totali attuali	%	Risorse totali post health check	%
Axes 1	168.500.000	41,0%	206.861.258	42,8%
Axes 2	174.738.500	42,5%	196.829.531	40,7%
Axes 3	42.900.000	10,43%	52.540.342	10,9%
Axes 4	21.000.000	5,11%	23.241.370	4,8%
TA	4.112.500	1,00%	4.112.500	0,9%
<b>Total</b>	<b>411.251.000</b>	<b>100%</b>	<b>483.585.000</b>	<b>100%</b>

**Include + 72,3 M.euro**

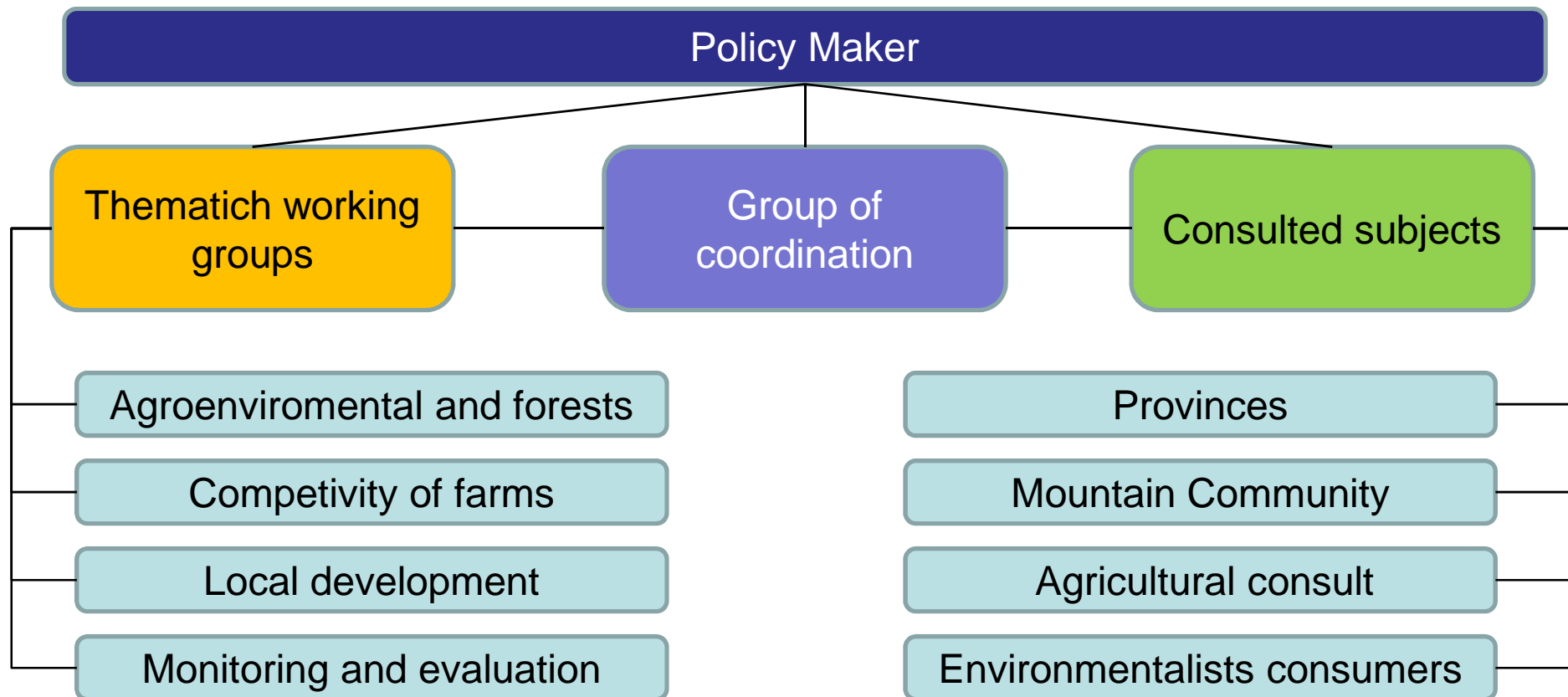
### Importi in spesa pubblica

Assi	Risorse totali attuali	%	Risorse totali post health check	%
Axes 1	382.954.545	41,0%	447.272.097	42,3%
Axes 2	397.132.955	42,5%	434.580.393	41,1%
Axes 3	97.500.000	10,4%	113.611.801	10,8%
Axes 4	47.727.273	5,1%	51.532.970	4,9%
TA	9.346.591	1,0%	9.346.591	0,9%
<b>Total</b>	<b>934.661.364</b>	<b>100%</b>	<b>1.056.343.852</b>	<b>100,00%</b>

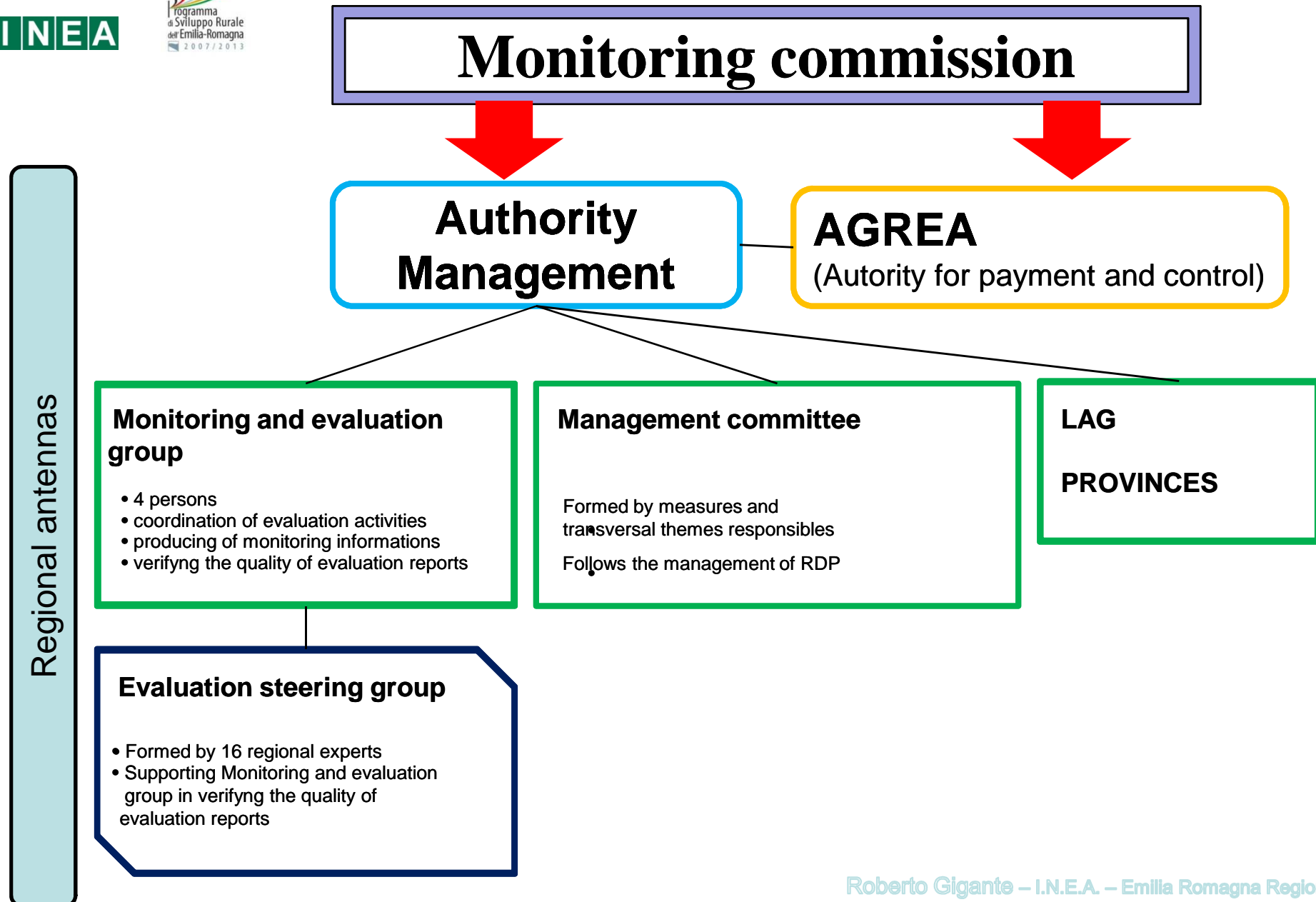
**Include + 121,8 M.euro**



## RDP – organizational model in the programming step:



# Management scheme





## Finally, why building the Network?

- To go over the isolation of rural development with other sectors, and favor a bottom up approach.
- Realize a large-scale model be up to spill over knowledge on rural development, and highlight the positive effects on territory
- To amplify effects and enhance the performance of join interventions



Rete Rurale  
Nazionale  
2007.2013



Unione Europea



**INEA**

**Regione Emilia-Romagna**



# Thank you for your attention

**[www.reterurale.it](http://www.reterurale.it)**

**[www.ermesagricoltura.it](http://www.ermesagricoltura.it)**

**[RGigante@Regione.Emilia-Romagna.it](mailto:RGigante@Regione.Emilia-Romagna.it)**

**[TSchipani@Regione.Emilia-Romagna.it](mailto:TSchipani@Regione.Emilia-Romagna.it)**