

TAIEX-REGIO PEER 2 PEER

FREQUENTLY ASKED QUESTIONS

WHAT IS TAIEX-REGIO PEER 2 PEER ABOUT AND WHAT DOES IT FINANCE? 2

- 1 WHAT DOES TAIEX-REGIO PEER 2 PEER FINANCE? 2
- 2 WHO FINANCES TAIEX-REGIO PEER 2 PEER EXCHANGES? IS ANY CONTRIBUTION EXPECTED FROM MEMBER STATES REQUESTING ASSISTANCE? 2
- 3 WHAT ARE ELIGIBLE COSTS WHICH WILL BE COVERED FROM THE TAIEX-REGIO PEER 2 PEER BUDGET? 3
- 4 TAIEX-REGIO PEER 2 PEER FINANCES ONLY SHORT-TERM PEER-TO-PEER EXCHANGES. WHAT IF MEMBER STATES ARE INTERESTED IN LONGER-TERM ASSIGNMENTS? 3

HOW TO APPLY FOR AN EXCHANGE WITH PEERS FROM OTHER MEMBER STATES? 3

- 5 WHO CAN APPLY FOR PEER-TO-PEER EXCHANGES? 3
- 6 WHERE TO APPLY FOR A PEER-TO-PEER EXCHANGE? IN WHICH LANGUAGE? 4
- 7 WILL THE SUBMISSION OF APPLICATIONS HAVE TO BE CO-ORDINATED AT NATIONAL LEVEL AND SUBMITTED VIA THE APPOINTED BODY? 4
- 8 WHY IS THE TOOL OPEN ONLY TO BODIES MANAGING THE EUROPEAN REGIONAL DEVELOPMENT FUND AND COHESION FUND? WHAT ABOUT EUROPEAN SOCIAL FUND AUTHORITIES? 4
- 9 HOW MANY EXCHANGES WILL BE FINANCED? 4
- 10 HOW WILL THE APPLICATIONS BE SELECTED? WILL COUNTRY QUOTA APPLY? 4

IMPLEMENTATION OF EXCHANGES 5

- 11 HOW WILL THE EXCHANGES BE IMPLEMENTED? WHAT WILL BE THE MAIN STEPS IN THE PROCESS? 5
- 12 WITHIN WHAT PERIOD OF TIME THE EXCHANGE CAN BE ORGANISED FROM THE MOMENT OF THE SUBMISSION OF THE APPLICATION? 6
- 13 HOW WILL IT BE ENSURED THAT EXPERTS DELIVER GOOD QUALITY ASSISTANCE? 7

HOW TO BECOME AN EXPERT FOR TAIEX-REGIO PEER 2 PEER? 7

- 14 WHO CAN BECOME AN EXPERT TO PROVIDE THE ASSISTANCE DURING EXCHANGES? WHAT IS THE PROCEDURE TO BE FOLLOWED IN ORDER TO REGISTER ONESELF AS EXPERT? 7
- 15 CAN ANY PUBLIC SECTOR EXPERT APPLY SPONTANEOUSLY TO BE ADDED TO THE EXPERT DATABASE OR DO THEY HAVE TO BE PROPOSED BY THEIR ORGANISATION? 7
- 16 WHY IS THE TOOL OPEN ONLY TO PUBLIC SECTOR EXPERTS? 7

WHOM TO CONTACT IN CASE OF QUESTIONS? 7

WHAT IS TAIEX-REGIO PEER 2 PEER ABOUT AND WHAT DOES IT FINANCE?

1 What does TAIEX-REGIO PEER 2 PEER finance?

The tool finances 3 types of short-term exchanges among public sector officials/institutions managing the European Regional Development Fund and Cohesion Fund:

Exchanges		Duration, participants
Expert missions	EU Member State experts can be sent to institutions in other Member States that have requested peer advice and exchange of experience on a specific topic.	2-5 days
Study visits	Participants from a requesting institution can be sent on a working visit to other EU Member State institutions to learn from peers and exchange good practices.	2-5 days, max 3 participants
Workshops	Single or multi-country workshops can be organised in a requesting institution.	Usually 2 days

Other forms of assistance and consultancy will not be financed: for example, studies, conferences, training courses or the like are outside the scope of this initiative.

2 Who finances TAIEX-REGIO PEER 2 PEER exchanges? Is any contribution expected from Member States requesting assistance?

During its pilot phase, until August 2016, peer-to-peer exchanges will be financed from the technical assistance of the European Commission, DG Regional and Urban Policy. The results of the pilot phase will be evaluated in 2016 after which a decision will be taken on the future and financing options of the scheme.

Certain costs related to an implementation of an exchange might need to be covered by the institution receiving assistance. For more on this, see question on eligible costs.

3 What are eligible costs which will be covered from the TAIEX-REGIO PEER 2 PEER budget?

TAIEX-REGIO PEER 2 PEER will finance:

	Travel and accommodation	Per diems	Fixed additional allowance EUR 250 per working day	Other costs (e.g. interpretation, catering, printing, room rent, etc.)
Expert missions	Yes – for experts	Yes – for experts	Yes – for experts	No
Study visits	Yes – for max 3 participants	No	Yes – possible for hosting institution upon request	No
Workshops	Yes – for visiting experts, but not for participants	Yes – for visiting experts, not for participants	Yes – for experts	No
Multi-country workshop	Yes – for experts, but not for participants	Yes – for experts, but not for participants	Yes – for experts	No

Other costs not mentioned in the table above are not eligible (e.g. catering, interpretation, printing, room or equipment rent, etc.) and would have to be covered by the institution requesting assistance.

4 TAIEX-REGIO PEER 2 PEER finances only short-term peer-to-peer exchanges. What if Member States are interested in longer-term assignments?

Before setting up TAIEX-REGIO PEER 2 PEER, European Commission has carried out a demand analysis in Member States. The feedback revealed that majority of Member States had a clear preference towards short-term, targeted assistance deployed rapidly once needs have been identified.

On the other hand, the expectation is that exchanges supported by TAIEX-REGIO PEER 2 PEER will facilitate longer-term relations among institutions, possibly leading to more systematic exchanges which can be supported from the technical assistance of Member States.

HOW TO APPLY FOR AN EXCHANGE WITH PEERS FROM OTHER MEMBER STATES?

5 Who can apply for peer-to-peer exchanges?

TAIEX-REGIO PEER 2 PEER is open to all Member States.

During its pilot phase, the tool is open to public sector officials/institutions responsible for the management of the European Regional Development Fund (ERDF) and Cohesion Fund.

The applications will be accepted from bodies which are part of the management and control system:

- managing authorities,
- intermediate bodies,
- audit authorities,
- certifying authorities,
- co-ordinating bodies,
- joint technical secretariats.
- Other bodies, directly involved in performing certain tasks related to the management and control of ERDF/CF could also be eligible (e.g. public procurement offices).

6 Where to apply for a peer-to-peer exchange? In which language?

The online application form is available on the TAIEX-REGIO PEER 2 PEER website <http://europa.eu/!xT39Xp>

We kindly request to fill-in the application form in English.

7 Will the submission of applications have to be co-ordinated at national level and submitted via the appointed body?

Organisation of the application process and related arrangements at national/regional level is Member State's competence.

We would just like to mention that existing network of TAIEX National Contact Points already has a lot of experience in facilitating peer-to-peer type of exchanges which could also be used in the framework of TAIEX-REGIO PEER 2 PEER initiative.

8 Why is the tool open only to bodies managing the European Regional Development Fund and Cohesion Fund? What about European Social Fund authorities?

This is a pilot project is launched and financed by DG Regional and Urban Policy. However, if the initiative turns out to be successful, there is always possibility of extending it to the European Social Fund.

9 How many exchanges will be financed?

During the pilot phase, until August 2016, the plan is to finance 80-100 exchanges.

10 How will the applications be selected? Will country quota apply?

TAIEX-REGIO PEER 2 PEER is open to all Member States. There are no country or other quotas foreseen.

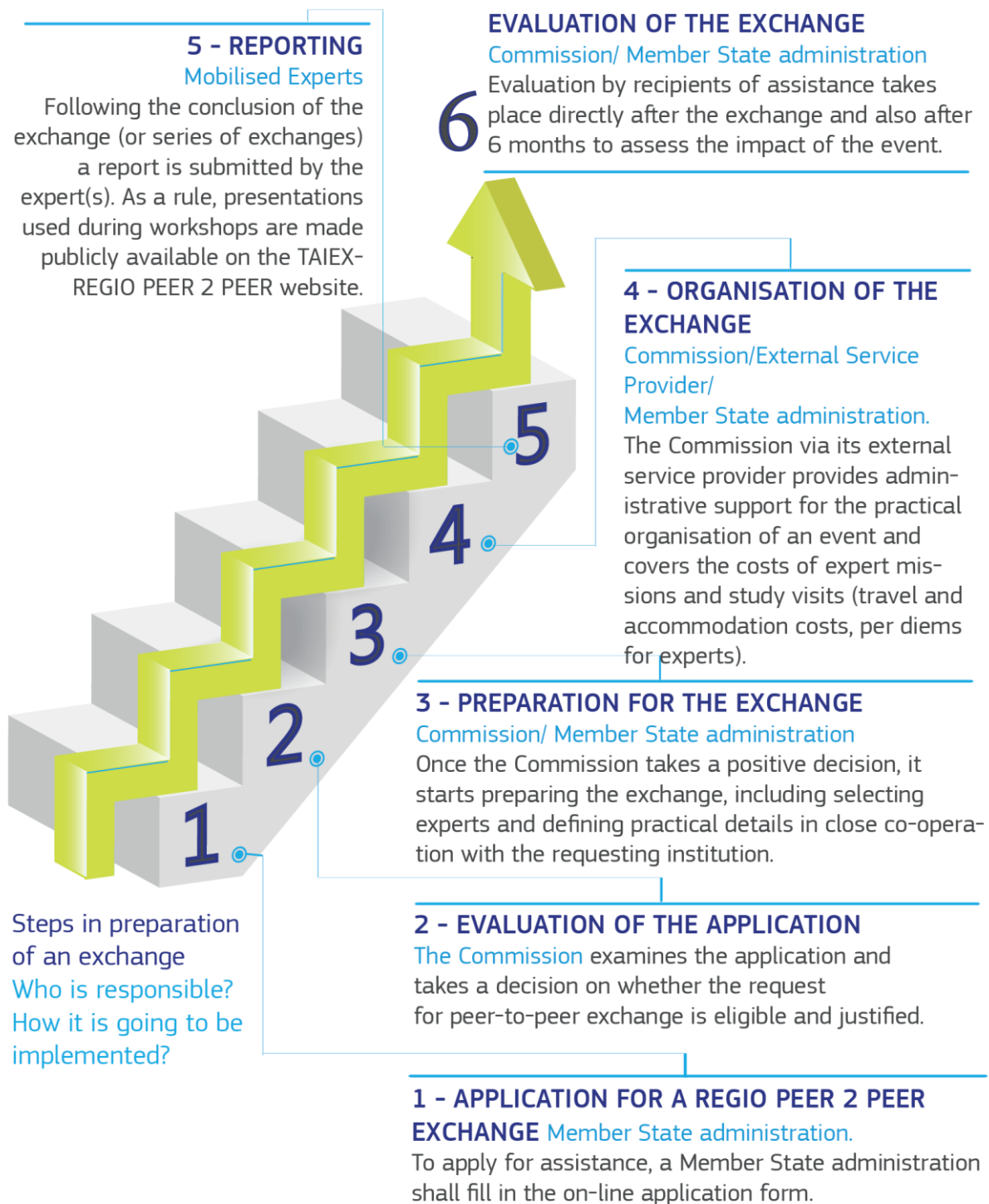
In case the demand turns out to be higher than available resources, the priority might be given to those requests which aim at the fulfilment of ex-ante conditionalities; are addressing bottlenecks identified in the programming documents for 2014-2020 or help in implementation of action plans linked to suspension/interruption of payments.

To be financed, applications need to be of good quality: the scope of assignment has to be well-defined, targeted, addressing specific needs and involving relevant institutions.

IMPLEMENTATION OF EXCHANGES

11 How will the exchanges be implemented? What will be the main steps in the process?

Please, see the scheme below which illustrates the main steps in the TAIEX-REGIO PEER 2 PEER process.



12 Within what period of time the exchange can be organised from the moment of the submission of the application?

This would depend on the quality of the application, availability of experts and other factors. However, experience shows that it is feasible to organise exchanges within 6-10 weeks.

13 How will it be ensured that experts deliver good quality assistance?

The European Commission has put in place some arrangements to ensure that there is a minimum of quality control performed on the assistance provided. Besides checking the qualities of potential experts ex-ante (CVs, previous experience, testimonies), we will also carry out systematic evaluations of individual exchanges. An evaluation is carried out twice after each exchange: upon the completion to assess the quality of the exchange and after 6 months to assess the longer-term impact.

HOW TO BECOME AN EXPERT FOR TAIEX-REGIO PEER 2 PEER?

14 Who can become an expert to provide the assistance during exchanges? What is the procedure to be followed in order to register oneself as expert?

Public sector officials working for an institution involved in the management of ERDF/CF and willing to participate in exchanges are invited to register themselves in a dedicated expert database.

The online application form is available on the TAIEX-REGIO PEER 2 PEER website <http://europa.eu/!xT39Xp>.

When registering, experts are encouraged to be specific in indicating their fields of expertise.

15 Can any public sector expert apply spontaneously to be added to the expert database or do they have to be proposed by their organisation?

Experts can register themselves on their own initiative.

16 Why is the tool open only to public sector experts?

EU Member States are already extensively making use of various types of capacity building measures offered by the market – for example, consultancy advice, training provided on the market and the like. What has been missing so far is a more systematic exchange of experience among public sector bodies carrying out similar functions and facing similar challenges in different Member States. European Commission often receives questions about how one or another issue is dealt with in another Member State or what is considered to be good practice. Against this background, DG Regional and Urban Policy is responding to this demand by creating a peer-to-peer learning tool. In dully justified cases (when specific type of assistance is not available in the public sector) Commission may seek assistance from private sector experts.

Whom to contact in case of questions?

E-mail: REGIO-PEER2PEER@ec.europa.eu

Web: <http://europa.eu/!xT39Xp>