

**CLUSTER "INNOVATIVE  
SOLUTIONS FOR AN  
INDEPENDENT LIFE"**

**"SIVI"**

# CASTILLA Y LEÓN



# CASTILLA Y LEÓN



AREA: 94.225 Km<sup>2</sup> (18,62 % of Spain)

POPULATION (01/01/2012): 2.546.078 inh.

POPULATION DENSITY: 27,02 inh/Km<sup>2</sup>  
(in Spain 93,66 inh/Km<sup>2</sup>)

# CASTILLA Y LEON

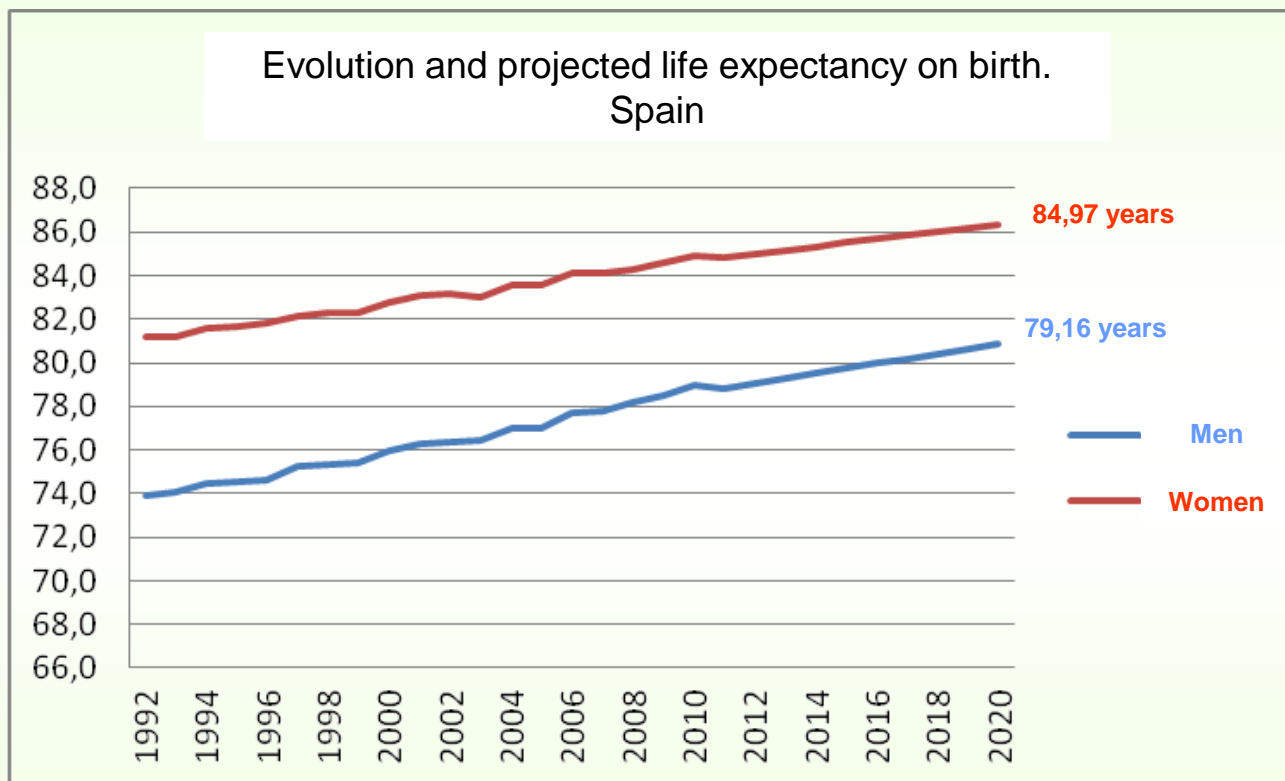
## POPULATION FACTORS



- High proportion of people aged over 80.
- High proportion of elderly people living in rural areas.
- Geographical dispersion of population.
- Ageing of Ageing of the population.

# EVOLUTION OF LIFE EXPECTANCY OF THE POPULATION

*Evolution of recent decades and projected life expectancy. Significant difference in the incidence of mortality by sex.*



Fuente: Instituto Nacional de Estadística

## HEALTHCARE AND SOCIAL SERVICES = OPPORTUNITY

### CASTILLA Y LEÓN 2012

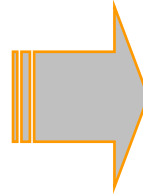
Population >65: 23,01%

Population >80 (regarding >65):  
36,03%

### Population Projections 2020:

Population > 65 : 24,9%

Population > 80 (regarding >65):  
36,1%



### ESPAÑA 2012

Population >65: 17,40%

Population >80 (regarding >65):  
30,30%

### Population projections 2020:

Population > 65 : 19,8%

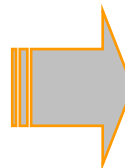
Population > 80 (regarding >65):  
31,2%



*Highest ageing index  
in Spain*



One of the highest **life expectancies** in the world



- In 2020, **64%** of older people **will need support and prevention activities** (people aged up to 80 years)
- In 2020, **36%** of older people **will need care** (people aged 80 and above)

# GENESIS OF THE CLUSTER IN CASTILLA Y LEÓN

- **ORIGEN:** Region of Castilla y León.
- **SCOPE:** As the project focuses on people, it has both: NATIONAL and INTERNATIONAL scope.
- **VALUE CHAIN:** It integrates the entire value chain of the social and health systems **for dependent and disabled people.**

## PARTNERS ALREADY INCORPORATED TO THE CLUSTER:

- ♦ **Technology Companies:** Eptisa Tecnologías de la Información, Divisa, Ides, S.L., Tecopy, Atos, Neoris, CSA, Connectis, Telefónica, INDRA, GMV
- ♦ **Companies for welfare (Care Providers):** Limcasa, Grupo Carflor, Servicios de Teleasistencia, CLECE, Grupo Ammma, Eulen Servicios Socio-sanitarios
- ♦ **Third Sector:** Fundación Intras, ASPAYM, Cruz Roja Española, ONCE, Fundamay, Alzheimer León
- ♦ **Innovation Agents:**
  - Technology Centres: Cidaut, ITCL, Cartif
  - Universities: University of Burgos, University of León, University of Valladolid.
- ♦ **Other Agents:** 1A Consultores, Bentabol Arquitects.
- ♦ **Public Administration:**
  - Regional Ministry of Family and Equal Opportunities (Social Services Management).
  - Regional Agency for Innovation, Financing and Internationalization (ADE).

**FUTURE INCORPORATIONS:** Between 10 and 15 partners within the 2 next months, integrating the entire value chain of the social and health sectors.

# FOCUS FOR ACTION

***DISABILITY  
AGING  
ACTIVE AGING***



**CARE SERVICES  
HEALTH SERVICES**



- Development of Solutions for maintaining quality of life and promote independent living of disabled and older people and their relationship to the dependency.
- Maintenance of the well-being and quality of life of people in situations of dependency.
- Universal vocation, given its focus for action: “the person”.



# Good Practices a European Level: INNOVAGE PROJECT

In Innovage are working 15 regional organizations from 14 European countries. The project, coordinated by the Government of the Marche region (Italy), has two partner groups:

➤ **MENTORING GROUP: European reference clusters:**

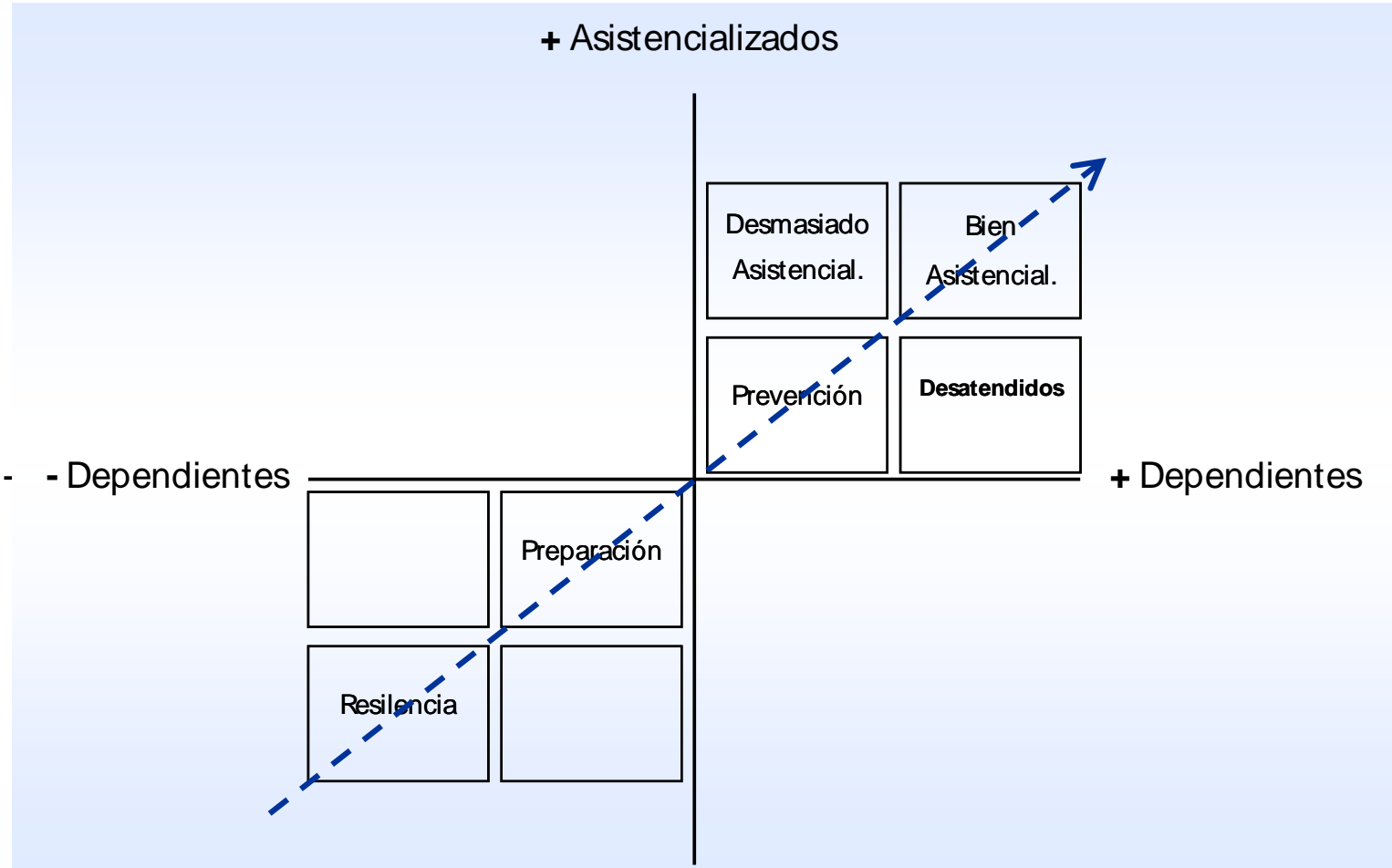
- I-LIVE Cluster (Italy)
- Cluster MEDIC@LPS (France)
- Baltic Institute of Finland (Finland)
- SEHTA (United Kingdom)
- Dutch Organization for Applied Scientific Research (The Netherlands)
- Institute for Technology of Blekinge (Sweden)

➤ **LEARNING GROUP: Regions interested in setting up a cluster:**

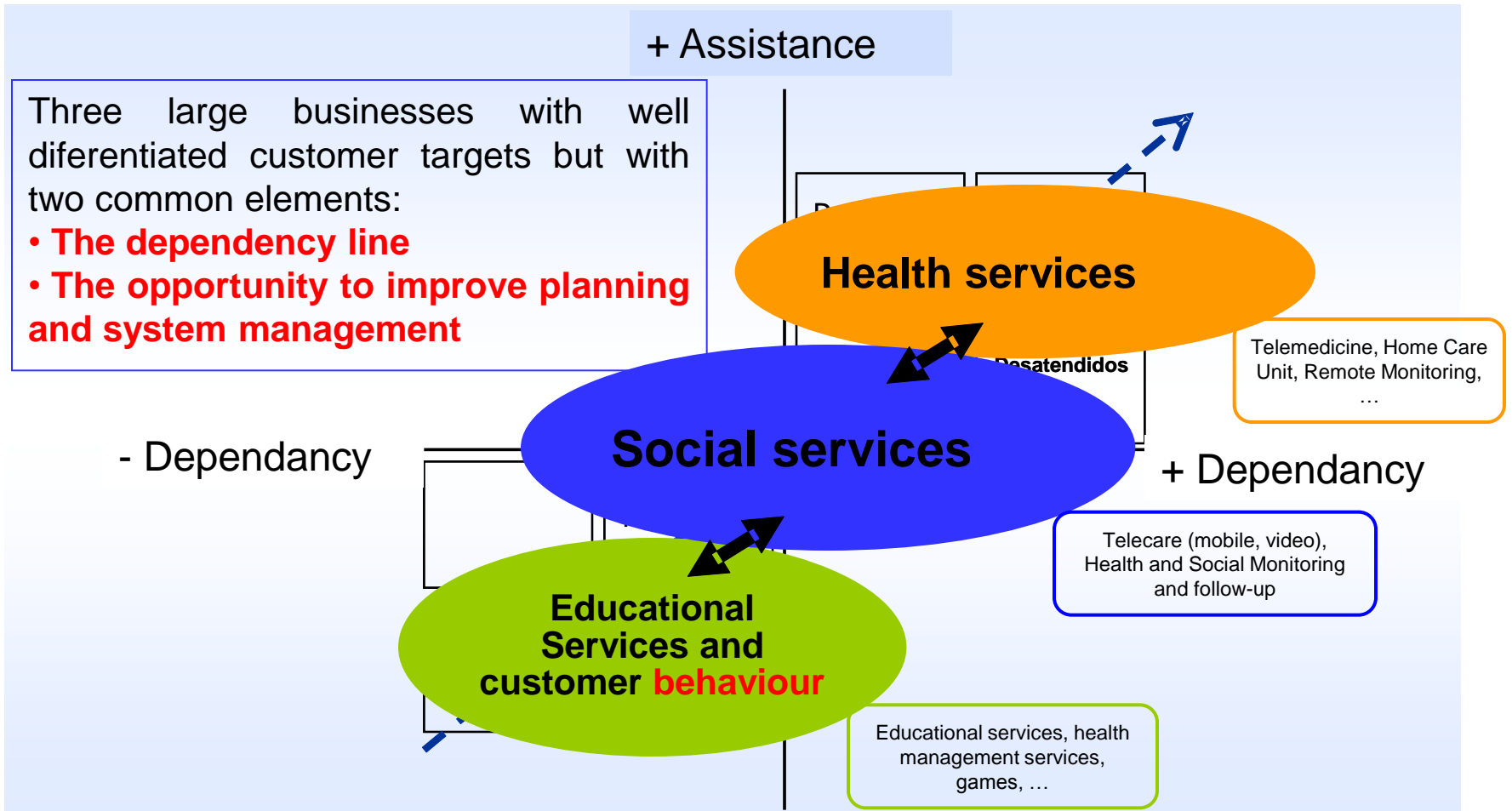
- Fundación INTRAS (Spain)
- Regional Office of Social Services of Castilla y León (Spain)
- City Council of Sofia (Bulgaria)
- Region of Central Macedonia (Greece)
- City Council of Geroskipou (Chipre)
- Center for Development Litija (Eslovenia)
- Innovation Center of Lituania LIC (Lituania)
- Regional Development Agency South Bohemia RERA, j.s.c (Czech Republic)
- Regional Development Agency of Rzeszow (Poland)



# BUSINESS WE ARE FOCUSING ON



# SCOPE OF WORK



# CHALLENGES OF THE CLUSTER

- **Challenge 1:** Promotion of Technology Transfer.
- **Challenge 2:** Higher quality of services and cost reduction. Management enhancements.
- **Challenge 3:** Adaptation of funding mechanisms and development of private market.
- **Challenge 4:** New "comprehensive" business models and incorporation of technology in the service.
- **Challenge 5:** Structuring and development of the technology supply.
- **Challenge 6:** Development of new products and services by users (Elderly and Dependent).

# ACTION PLAN

- **Promotion of technology transfer.**
- **Competitive Improvement Program for the agents.**
- **Increased public procurement of innovative technology.**
- **Private market development.**
- **Enterprise Consolidation and collaboration.**
- **International positioning of the group and its agents.**

# GOVERNANCE AND MANAGEMENT STRUCTURES

## I/ Institutional structure

General Assembly



Board of Directors

## ADVISORY COUNCIL

Persons or entities (public or private) of recognized prestige in the academic, scientific or industrial sector at national or international level, who can bring knowledge and experience as well as strategic guidance to the Cluster.

## II/ Operational structure



WORKING GROUP 1

WORKING GROUP 2

WORKING GROUP 3

WORKING GROUP 4

# MEMBERS

Fundación



en Transporte y Energía



Servicios Sociales  
de Castilla y León

uno@  
consultores



NEORIS  
Practical Visionaries



fgulem  
Fundación General  
de la Universidad de León  
y de la Empresa



Ade

Agencia de Innovación, Financiación  
e Internacionalización Empresarial

Atos



indra



UNIVERSIDAD  
DE BURGOS

aspaym

gmv®

eptisa



Instituto Tecnológico de Castilla y León

Telefonica

Divisa IT  
INFORMÁTICA Y TELECOMUNICACIONES



Cruz Roja

Cotesa



Grupo Carflor

SERVICIOS DE TELEASISTENCIA

'ST'



FUNDACIÓN  
INTRAS



Centro tecnológico

CARTIF



alzheimer  
León



Clece  
SERVICIOS  
SOCIALES

connectis  
member of Getronics



# Thank You

Contact Reference:

Mr. Miguel Angel Garrido Moyano

Ph: +34 983 324199

Email: [garmoymi@jcyl.es](mailto:garmoymi@jcyl.es)