

INNOVATION PROCESS AS A STRATEGY PLANNING TOOL

The REMOWE Conference, Innovation process Start
up, Wroclaw, 23.11.2011

Tuomo Eskelinen, Savonia University of Applied
Sciences

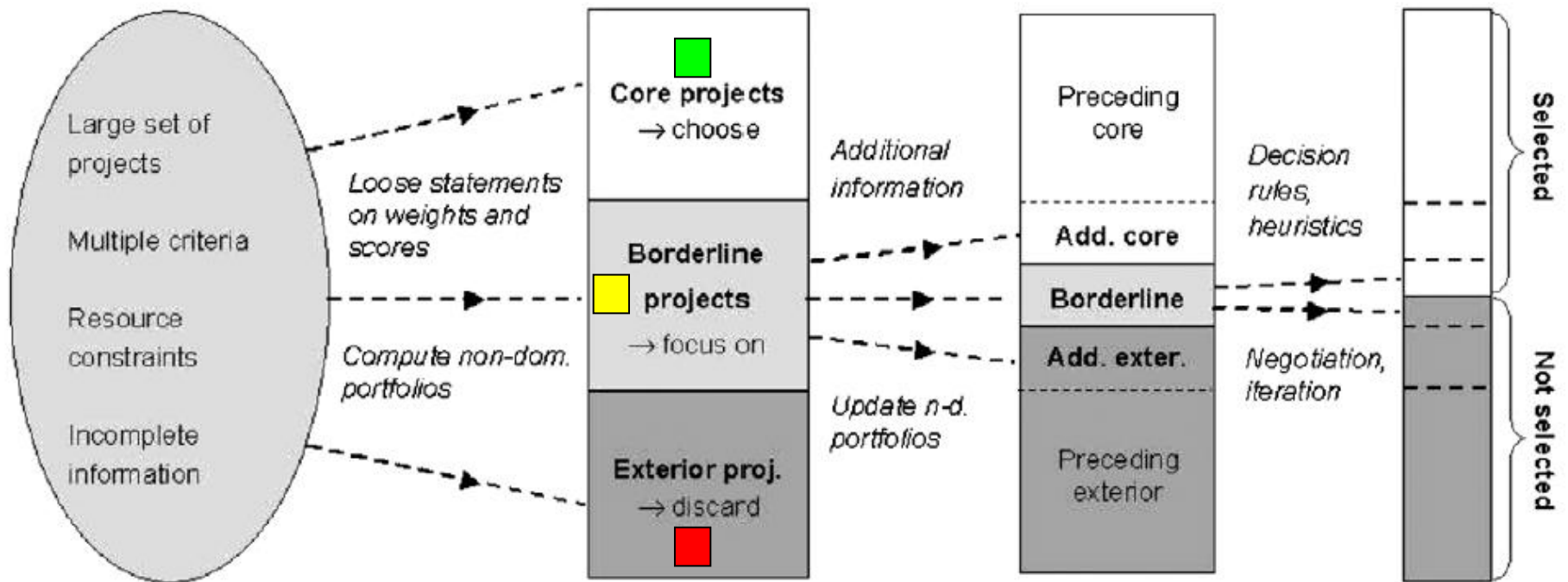


PHASES OF THE INNOVATION PROCESS

- **Defining the decision context:** present situation, future scenarios, aspirations and objectives
- **Idea generation** and collection: formulating idea concepts
- **Evaluation** based on selected criteria, for example *innovativeness, feasibility and significance*; grading idea concepts from 1 to 7
- **Analysis** based on *RPM-methodology*
- **Workshop** based on analysis assessing, discussing, arguing, selecting and formulating the action plan
- **Action plan => Strategy**



RPM - methodology



RPM –WHY?

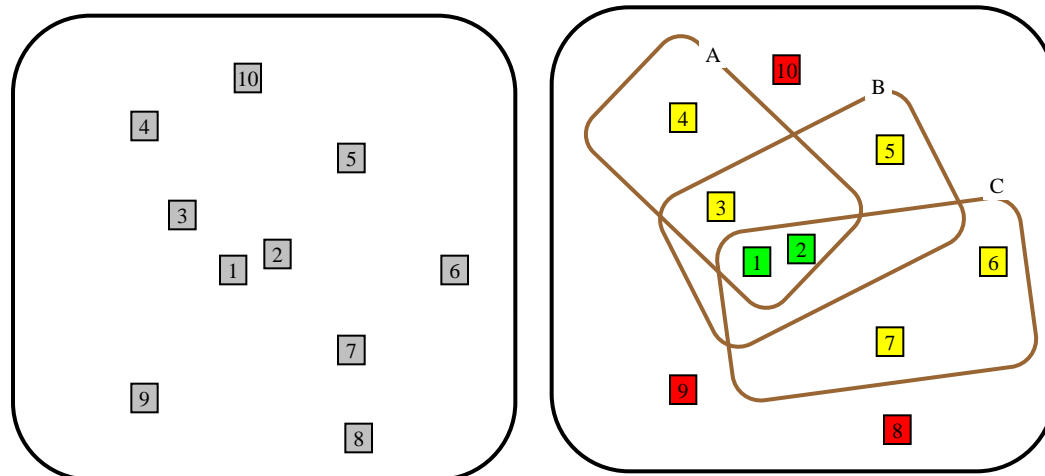
○ Benefits

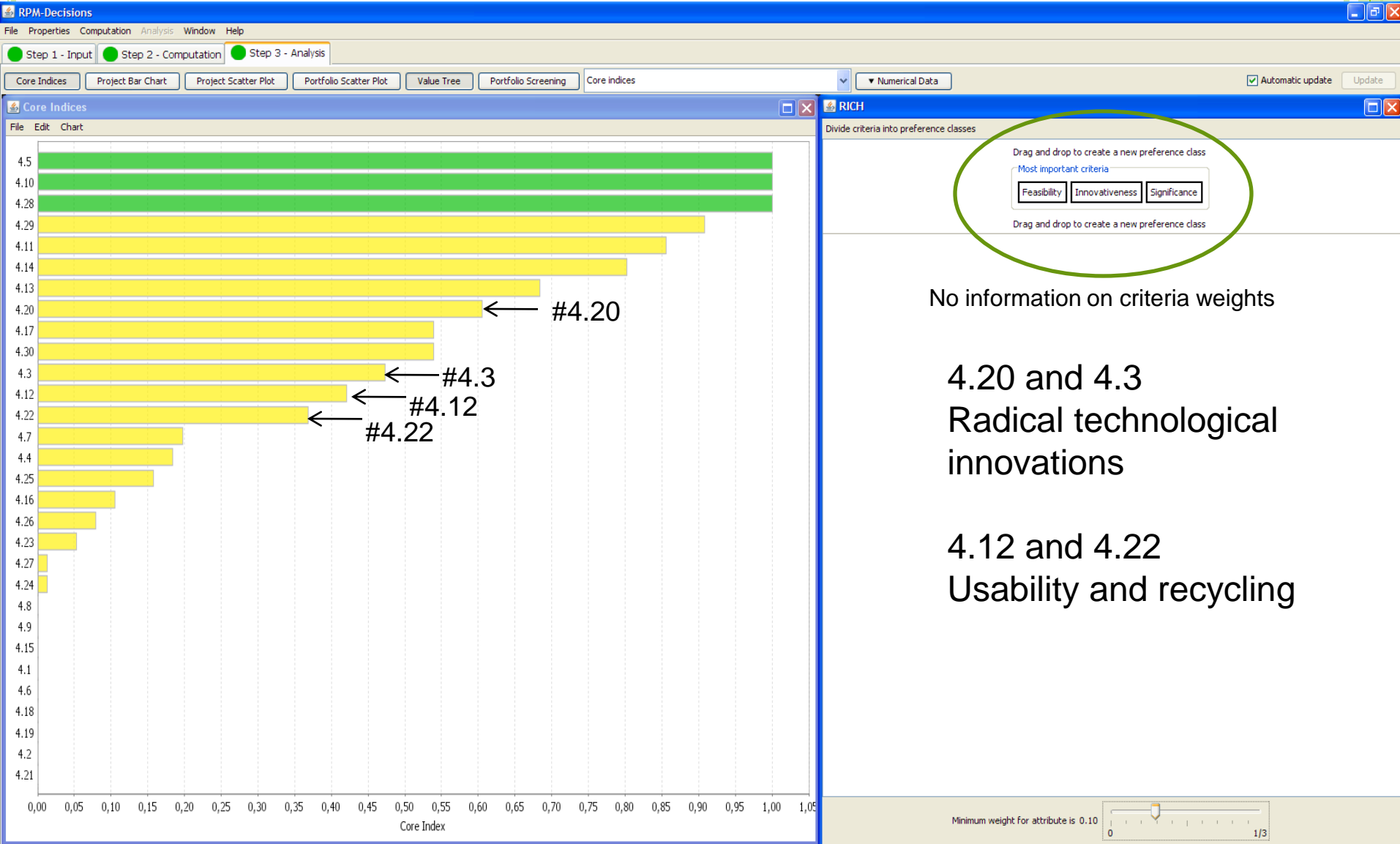
- Allow big number of respondents easily to formulate innovation ideas
- Allow big number of evaluators, experts and real decision makers easily to involve
 - transnational involvement
- Transparent valuation and selection process
- Support workshop discussions and decision making
- Results can be “put together” with one number
 - the core index 0-1



CORE INDEX

- Core index tells in how many effective portfolio one particular idea concept is included
 - *Core projects* included in every effective portfolio (core index 100 %)
 - *Exterior projects* not included in any effective portfolio (core index 0 %)
 - *Borderline projects* included in some effective portfolios ($0 < \text{core index} < 100$)

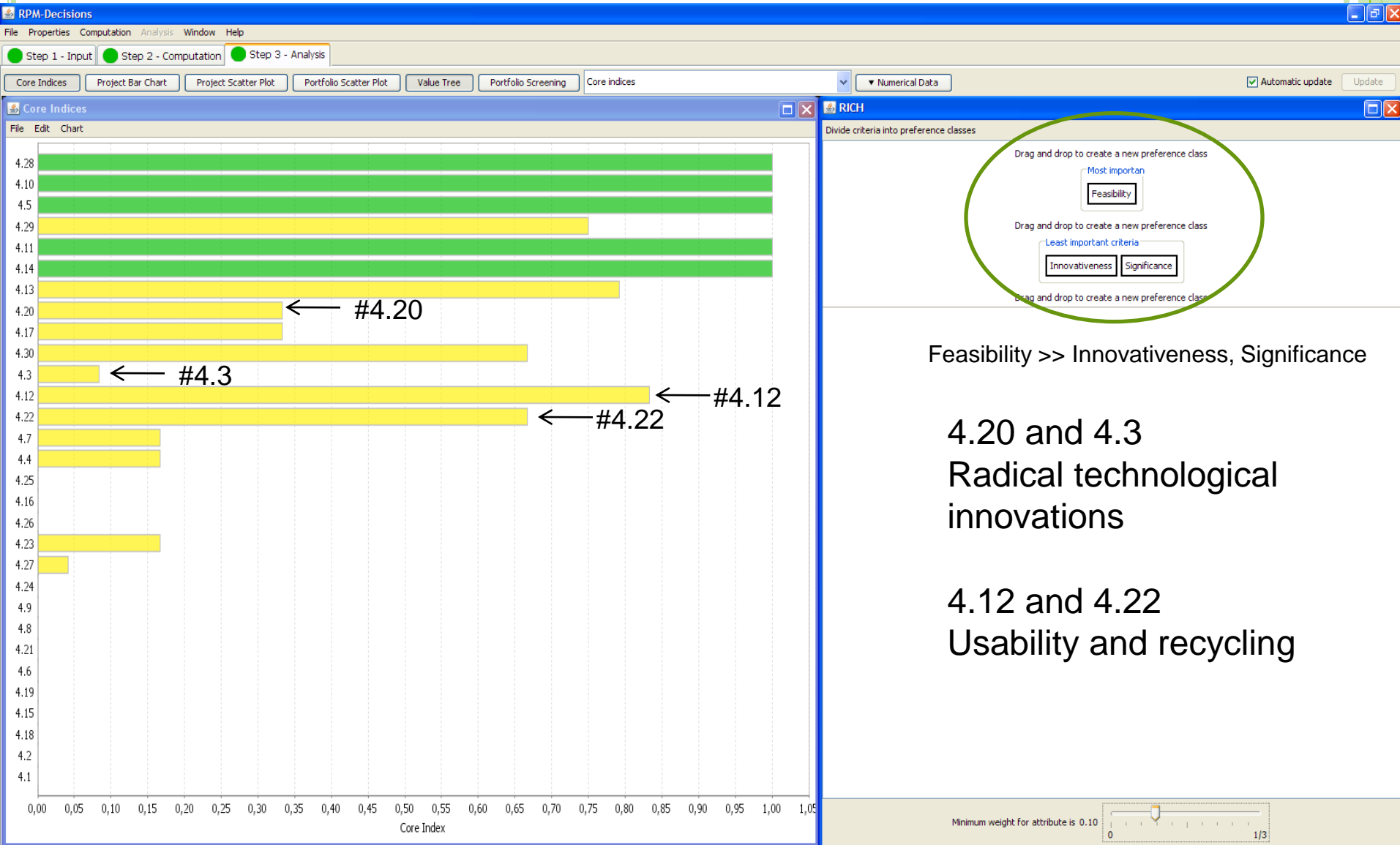




No information on criteria weights

4.20 and 4.3
Radical technological innovations

4.12 and 4.22
Usability and recycling



Feasibility >> Innovativeness, Significance

4.20 and 4.3
Radical technological innovations

4.12 and 4.22
Usability and recycling

RPM - ROBUST PORTFOLIO MODELING

- Developed in the Laboratory of Systems Analysis in Aalto University by professor Ahti Salo's group (<http://www.rpm.tkk.fi/>)
- Decision support methodology for analyzing multiple criteria project portfolio problems



PROCEDURE, HOW TO START UP

- REMOWE Innovation Platform

<http://apps.savonia.fi/projects/remowe>

To start up the Waste to Energy Innovation Process in Poland:

- Schedule ☺
- Scenarios –Categories ☺
- Idea generators – all ideas welcome!
- Idea evaluators –three criterias needed
- Workshop to discuss and select the ideas for further processing and to decide who takes the lead for further actions



