

# REMIX brings together:

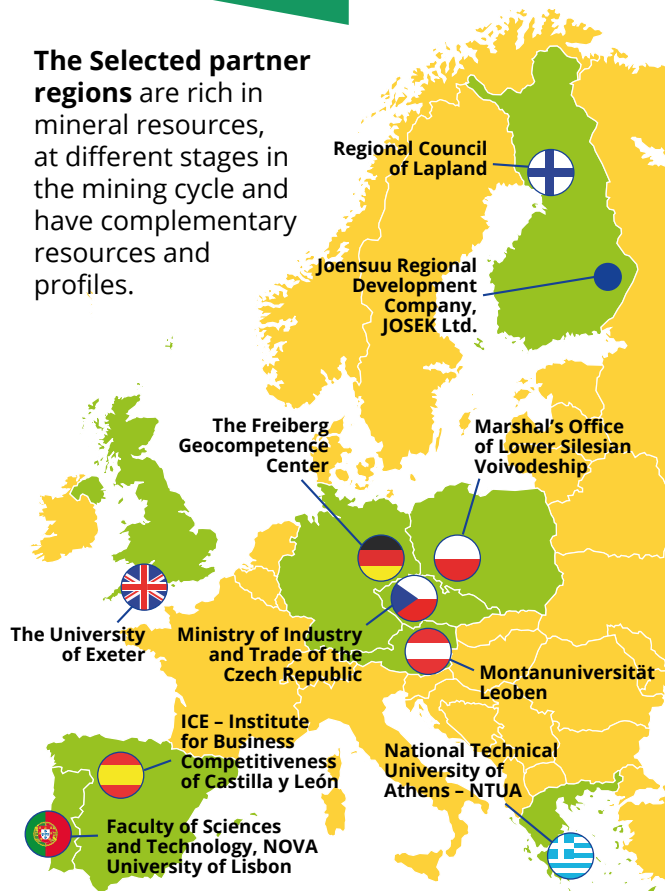
9 Partners

1 Advisory Partner

9 Countries

8 Policy Instruments

The Selected partner regions are rich in mineral resources, at different stages in the mining cycle and have complementary resources and profiles.




## REMIX Contact information


 **Coordinating Partner**  
**Regional Council of Lapland, Finland**  
 Ilari Havukainen, +358 40 621 6116,  
 remix@lapinliitto.fi


 **Advisory Partner**  
**The Freiberg Geocompetence Center, Germany**  
 Wolfgang Reimer, +49 373 177 3715,  
 wolfgang.reimer@gkz-ev.de


**For more information:**  
[www.interregeurope.eu/remix](http://www.interregeurope.eu/remix)


 **Follow us also on Twitter:**  
 @REMIXmining


### The Partner Policy Instruments under review

 Sustainable growth and jobs 2014 – 2020 Finland's structural funds programme, Priority axis 2: Producing and using the latest knowledge and skills (ERDF) Specific objective 4.1: Developing research, competence and innovation clusters that draw from regional strengths.


 The 2014 – 2020 ERDF Operational Programme of Castilla y León (OP): Thematic Objective 1: Fostering of Research, Technological Development and Innovation, Thematic Objective 6: Preserving and protecting the environment and promoting resource efficiency.


 Regional Innovation Strategy for 2011 – 2020 of the Lower Silesian Voivodeship.

 Raw materials planning and management at national and regional level.

 CENTRO2020 Operational Program.

 State Raw Materials Policy of the Czech Republic

 Cornwall and Isles of Scilly Local Enterprise Partnership European Structural and Investment Fund Strategy

 Regional Operational Programme of Sterea Ellada (ROP) 2014 – 2020



## Smart and Green Mining Regions of EU



Leading the European policies towards more sustainable mining

[www.interregeurope.eu/remix](http://www.interregeurope.eu/remix)



## Strategic goals

To exploit the synergies between the participating regions and jointly:

- Advance the sustainability of the mining sector
- Improve the cumulative impact to the regional development through innovation
- Increase the regional SME growth and innovation capacity development
- Involve the regional RDI
- Develop dialog between regional and industrial policy making in the EU context

## Importance of the project in EU

The project answers to the need for collaboration between European Commission and regional policy makers to develop complementary approaches, which will boost EU competitiveness and stimulate sustainable development, growth, jobs and new SME industries.

To implement the policy into practice the regions with the mineral resources will have a strategically important role in the development of sustainable mining industry.



## How do we get there!

The project follows the three main procedures, defined by the programme:

1. Learning from good practices
2. Interregional collaboration
3. Interregional communication

**Project partners** and stakeholders take part in the activities together, to share knowledge and develop best practice guidelines.

**Those best practices** will be communicated directly to the European Commission at the end of phase 1 to help improve the EC policy on raw materials.

